

* % 8 ()
* % 8 ()

0\$5

6SHFLDO)RU '& \$& 5HFWLILHU %ULG

)HDWXUHV

‡&RPSOLDQW ZLWK 5R+6 3URYLVL
‡/RZ IRUZDUG YROWDJH KLJK IRU
‡+LJK IRUZDUG VXUJH FXUUHQW F
‡+LJK KHDW FRQGXFWLQJ SHUIRU
‡ 7KHUPDO ZHOGLQJ SHUIRUPDQF
‡ VHF

3,11,1*

3,1	'(6&5,37,21
	Input Pinỹ -ỹ
	Input Pinỹ -ỹ
	OutputQRGHỹ +ỹ
	Output&DWKRGHỹ -ỹ

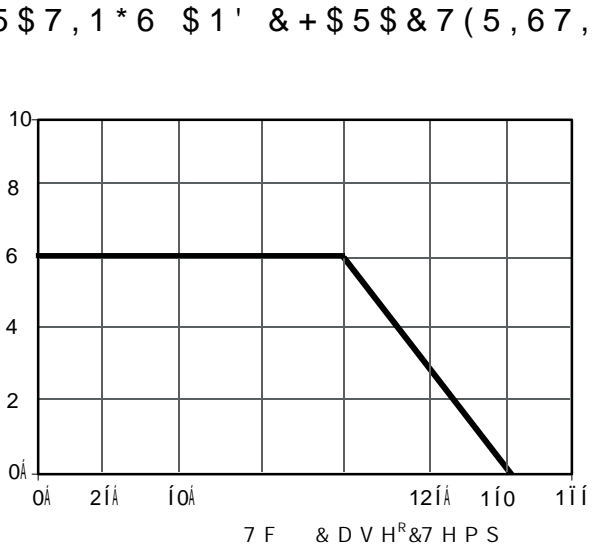
\$SSOLFDWLRQV

‡6ZLWFKLQJ 3RZHU 6XSSO\
‡+RPH\$SSOLDQFHV 2IILFH 'HYLFH
‡,QG XVWULDO \$XWR HTXLSPHQWV

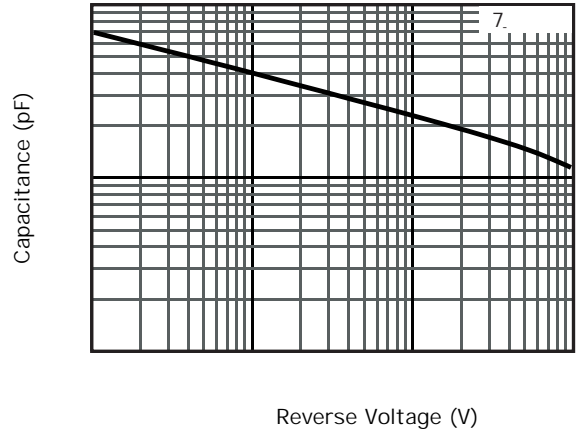
* % 8 (

* % 8 (

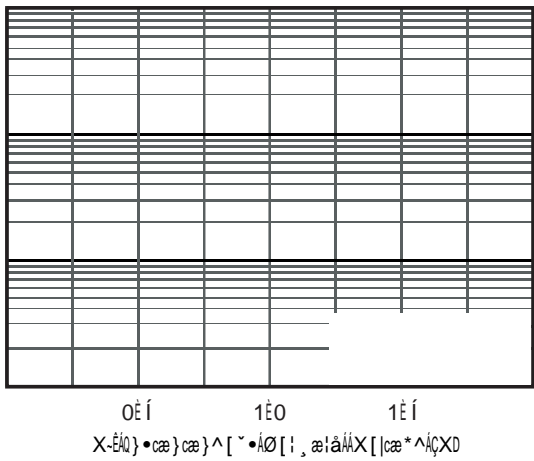
0\$5



Current Derating, Case



Typical Junction Capacitance



Typical Forward Voltage

9 5 5 H 9HR WWD J H 9 R O W V

Typical Reverse Current

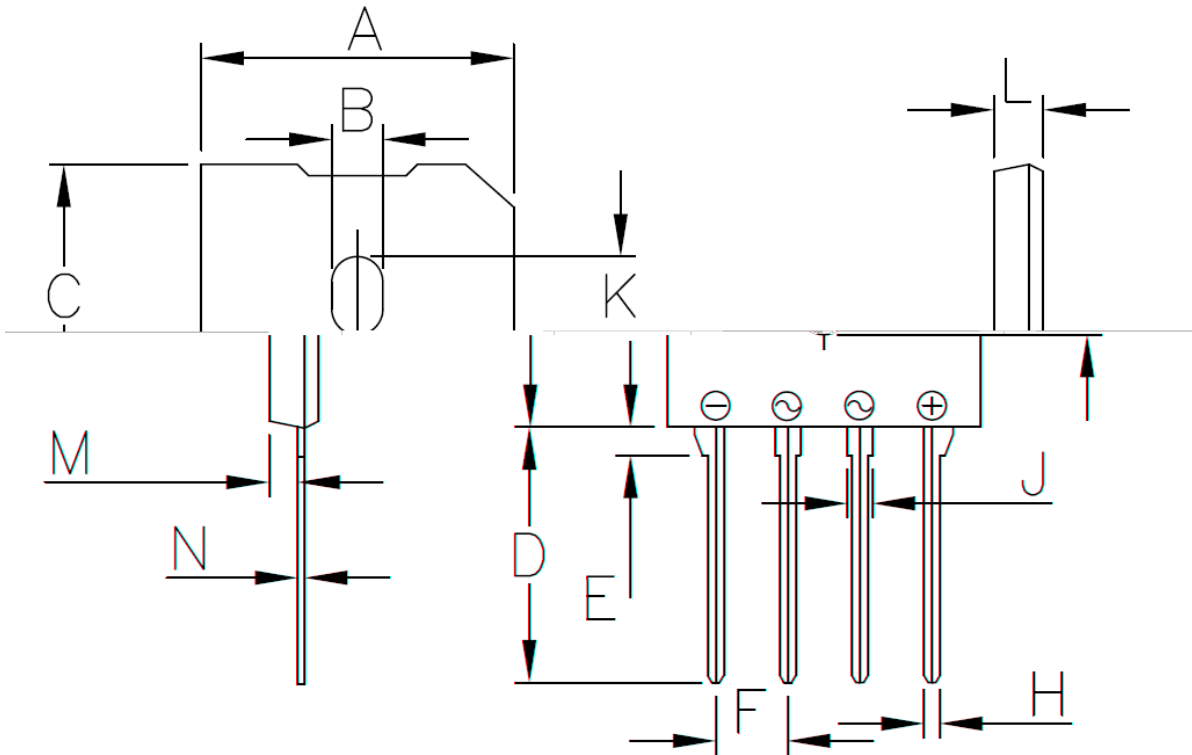
* % 8 (

* % 8 (

0\$5

3\$&.\$ (287/,1',0(16,216

1RWH XQLW PP LQFK



* % 8PHFKDQLFWD XQLW PP LQFK

8QLW	\$	%	&	'	()	+	-	.	/	0	1
PP	PD										
	PLQ										
LQFK	PD										
	PLQ										

* % 8 (? * % 8 (5HY

:RUOG ,QWH&KQLDQLFRLO/DHOG